



Andy Beshear  
GOVERNOR

## TRANSPORTATION CABINET

200 Mero Street  
Frankfort, Kentucky 40601

Jim Gray  
SECRETARY

July 23, 2025

CALL NO. 111  
CONTRACT ID NO. 252977  
ADDENDUM # 1

Subject: Pike County, BRO 1191(054)  
Letting July 24, 2025

- (1) Revised - Completion Date - Cover Page & Page 4 of 177
- (2) Revised - Special Note - Pages 45-49 of 177
- (3) Added - Special Note - Page 51 of 177
- (4) Added/Revised - MOT Notes- Pages 142B-145 of 177
- (5) Revised - Proposal Bid Items - Page 177 of 177

Proposal revisions are available at <http://transportation.ky.gov/Construction-Procurement/>.

If you have any questions, please contact us at 502-564-3500.

Sincerely,

A handwritten signature in black ink that reads "Rachel Mills".

Rachel Mills, P.E.  
Director  
Division of Construction Procurement

RM:mr  
Enclosures



**CALL NO. 111**

**CONTRACT ID. 252977**

**PIKE COUNTY**

**FED/STATE PROJECT NUMBER BRO 1191(054)**

**DESCRIPTION ROBERT H. FOGLESONG BRIDGE OVER TUG FORK AND NS RR (US 119)**

**WORK TYPE BRIDGE REPAIR MISCELLANEOUS WORK**

**PRIMARY COMPLETION DATE 8/1/2026**

**LETTING DATE: July 24,2025**

Sealed Bids will be received electronically through the Bid Express bidding service until 10:00 AM EASTERN DAYLIGHT TIME July 24,2025. Bids will be publicly announced at 10:00 AM EASTERN DAYLIGHT TIME.

**NO PLANS ASSOCIATED WITH THIS PROJECT.**

**DBE CERTIFICATION REQUIRED - 0%**

**REQUIRED BID PROPOSAL GUARANTY: Not less than 5% of the total bid.**

ADMINISTRATIVE DISTRICT - 12

CONTRACT ID - 252977  
BRO 1191(054)  
COUNTY - PIKE  
PCN - MB09801192577  
BRO 1191(054)

ROBERT H. FOGLESONG BRIDGE OVER TUG FORK AND NS RR (US 119) BRIDGE 098B00151N OVER TUG FORK  
AND NS RR AT MP 22.66BRIDGE REPAIR MISCELLANEOUS WORK SYP NO. 12-10159.  
GEOGRAPHIC COORDINATES LATITUDE 37:30:34.00 LONGITUDE 82:22:01.00  
ADT

COMPLETION DATE(S):

90 CALENDAR Days	APPLIES TO 098B00151N (SEE SPECIAL NOTE)
COMPLETED BY 08/01/2026	APPLIES TO ENTIRE CONTRACT (SEE SPECIAL NOTE)

**SPECIAL NOTE FOR TRAFFIC CONTROL ON BRIDGE REPAIR CONTRACTS**

**I. DESCRIPTION**

Traffic shall be maintained in accordance with the Kentucky Transportation Cabinet, Department of Highways 2019 Standard Specifications for Road and Bridge Construction and applicable Supplemental Specifications, the Standard Drawings, this Note, and the Contract Documents. Section references are to the Standard Specifications. Except for the roadway and traffic control bid items listed in the Contract Documents, all items of work necessary to maintain and control traffic will be paid at the lump sum bid price to "Maintain and Control Traffic".

Contrary to Section 106.01, traffic control devices used on this project may be new, or used in like new condition, at the beginning of the work and maintained in like new condition until completion of the work.

Any temporary traffic control items, devices, materials, and incidentals shall remain the property of the contractor unless otherwise addressed, when no longer needed.

**II. MAINTAIN & CONTROL TRAFFIC**

The Contractor is responsible for maintaining traffic 24 hours per day and 7 days per week throughout the project duration. "Maintain and Control Traffic" will be measured only once for payment. See Section 112.04.01 for additional information.

The Department will make payment for the completed and accepted quantities under the following:

<u>Code</u>	<u>Pay Item</u>	<u>Pay Unit</u>
02650	Maintain and Control Traffic	Lump Sum

The Department will consider payment as full compensation for all work required.

**III. TEMPORARY SIGNS**

Contrary to Section 112.04.02, only long term signs (signs intended to be continuously in place for more than 3 days) will be measured for payment; short term signs (signs intended to be left in place for 3 days or less) will not be measured for payment and will be incidental to "Maintain and Control Traffic."

The Department will make payment for the installed and accepted quantities under the following:

<u>Code</u>	<u>Pay Item</u>	<u>Pay Unit</u>
02562	Temporary Signs	Square Feet

The Department will consider payment as full compensation for all work required.



#### **IV. TEMPORARY CONCRETE MEDIAN BARRIER**

Furnish, install, maintain, relocate, and remove Temporary Barrier Rails in accordance with the Contract Documents, this Note, and section 509 of the Standard Specifications. Where the Standard Specifications differ from the Contract Documents and this Note, the Contract Documents and Note shall prevail.

##### **A. CONSTRUCTION**

1. Lift and place the barrier units using a 2 point pickup, or another approved method. Do not lift units by the connectors.
2. Do not use any unit which has been cracked, chipped, scarred, or otherwise damaged or disfigured unless the Engineer approves.
3. Install the units at the locations specified in the Plans, and connect them in the manner detailed on the Plans.
4. Keep delineators clean and provide replacement delineators when necessary.
5. For all units in a continuous run, use units of the same type and height, and provide a smooth transition.
6. Provide for an approved monitoring schedule with a person on call and available 24 hours a day, each day of the week to realign barrier which has been struck. Initiate within one hour of notification of need.
7. Replace all units damaged after installation with an undamaged unit.
8. When the units are no longer needed, remove the units from the project. Take ownership of all units except Department furnished units. Transport Department furnished units to the location specified in the Contract.

##### **B. MEASUREMENT**

1. CONCRETE BARRIER WALL TYPE 9T. The Department will measure the quantity of Temporary Barrier Rail furnished, installed, maintained, and removed by multiplying the nominal length of each unit in linear feet by the number of units. The Department will measure units installed to replace units damaged by traffic. The Department will not measure the disposal of units or units installed to replace units damaged by construction operations for payment and will consider them incidental to this item of work. The Department will not measure furnishing, installing, or maintaining lifting devices for payment and will consider them incidental to this item of work. The work required on this contract is not typical. The department will not measure furnishing, installing, or maintaining lifting devices for payment and will consider them incidental to this item of work.
2. RELOCATE TEMPORARY CONCRETE BARRIER. The Department will measure the quantity of Temporary Barrier Rail relocated by multiplying the nominal length of each unit in linear feet by the number of units.
3. BARRICADE-TYPE III. The Department will measure the quantity of Barricade-Type III placed by the number of units.

**C. PAYMENT.** The Department will make payment for the completed and accepted quantities of the Temporary Barrier Rail under the following:

<u>Code</u>	<u>Pay Item</u>	<u>Pay Unit</u>
03171	Concrete Barrier Wall Type 9T	Linear Feet
02003	Relocate Temporary Concrete Median Barrier	Linear Feet
02014	Barricade – Type III	Each

The Department will consider payment as full compensation for all work required.

**V. CRASH CUSHIONS**

Furnish and install crash cushion systems of the designated types and configurations at the locations shown on the plans. Install each type of crash cushion according to the Standard Drawings and according to the manufacturer’s instructions.

**A. CONSTRUCTION**

Construction of the crash cushion systems shall be in accordance with Section 725.03 pf the Standard Specifications.

**B. MEASUREMENT**

1. TEMP CRASH CUSHION. The Department will measure the quantity of Temp Crash Cushion units furnished, installed, dismantled, and stored on the right-of-way. The Department will not measure furnishing and installing the W-beam to crash cushion connectors; furnishing and installing rear unit plates and front unit plates; work or materials necessary to repair damaged crash cushions; materials kept in stock or used to repair damaged crash cushions; or dismantling the units and storing them on the right-of way for payment and the Department will consider them incidental to the crash cushion.
2. RELOCATE CRASH CUSHION. The Department will measure the quantity by each unit and will consider it to include the unit’s removal and re-installation at a different location.

**C. PAYMENT.** The Department will make payment for the completed and accepted quantities of the Temporary Barrier Rail under the following:

<u>Code</u>	<u>Pay Item</u>	<u>Pay Unit</u>
20738NS112	Temp Crash Cushion	Each
02898	Relocate Crash Cushion	Each

**VI. ROADWAY CLOSURES**

The contractor is allowed 15 minute roadway closures, subject to approval by the Engineer, to facilitate construction activities. Provisions shall be made for the timely passage of emergency vehicles through the roadway closure. The Department will not measure roadway closures. They will be incidental to “Maintain and Control Traffic.”

**VII. PROJECT PHASING & CONSTRUCTION PROCEDURES**

Except for roadway closures as specified above, maintain two lanes of traffic at all times in accordance with the Contract Documents and Standard Drawing No. TTC-140-4 and TTC-141-4. Provide additional traffic control or flaggers as directed by the engineer. The clear lane width required is 11’-0” minimum. Stripe and taper according to MUTCD and the Standard Drawings. Maintain traffic as specified in the phasing notes and typical sections.

**VIII. PORTABLE CHANGEABLE MESSAGE BOARDS**

The contractor will be responsible for supplying all flashing arrow panels and changeable message signs necessary to maintain traffic for the project. Upon completion of the project, the flashing arrow panels and changeable message signs shall remain the property of the contractor. The location and use of arrow panels and portable changeable message signs will be at the direction of the Engineer. The Department will not measure installation, maintenance, or removal for payment and will consider them incidental to this item of work. Flashing Arrows & Portable Changeable Message Boards will be paid for once, no matter how many times they are moved or relocated. The Portable Changeable Message Signs shall be used as directed by the Engineer. The messages required to be provided will be designated by the Engineer. The PCMS will be in operation at all times. In the event of damage or mechanical/electrical failure, the contractor will repair or replace the PCMS immediately.

The Department will make payment for the installed and accepted quantities under the following:

<u>Code</u>	<u>Pay Item</u>	<u>Pay Unit</u>
02671	Portable Changeable Message Sign	Each
02775	Arrow Panel	Each

The Department will consider payment as full compensation for all work required.

**IX. PAVEMENT MARKINGS**

Any striping removal (temporary or permanent) shall be removed by water blasting. Water blasting and removal of temporary tape will be considered incidental to the “Maintain and Control Traffic” bid item.

Temporary striping will be paid for by the appropriate bid item shown in the Maintenance of Traffic Item summary. Place temporary striping in accordance with Section 112, except that:

- 1. Temporary markings will be 4” width.
- 2. If the contractor's operations or phasing requires temporary markings which must be subsequently removed from the ultimate pavement, an approved removable lane tape will be used.
- 3. Edge lines will be required for temporary striping.
- 4. Existing, temporary, or permanent striping will be in place before a lane is opened to traffic.

Should the Contractor change the existing striping pattern, the Contractor is to restripe the roadway back to its original configuration after a certain period of time, especially if no work is anticipated for a period of time.

All payment for temporary and permanent striping shall be considered incidental to bid item 02650 “Maintain and Control Traffic”.

**X. RELOCATION OF SIGNAL HEADS**

Use traffic signals for the control of traffic through presently signalized intersections. Cover or turn all signal heads that are not in use. Clearly indicate the signals are not in operation. The Department will measure the quantity of temporary relocation of existing signal heads by each individual unit.

<u>Code</u>	<u>Pay Item</u>	<u>Pay Unit</u>
21659NN	Relocate Signal Head	Each

**XI. CURB REMOVAL AND REPLACEMENT**

All materials and labor associated with the removal and replacement of concrete curb and island median that is required to provide adequate taper lengths during construction shall be incidental to bid item 02650 “Maintain and Control Traffic”.

All materials and labor required to provide an adequate driving surface where the concrete island and curb is located shall be incidental to bid item 02650 “Maintain and Control Traffic”.

**SPECIAL NOTE FOR CONTRACT COMPLETION DATE AND  
PENALTIES ON BRIDGE REPAIR CONTRACTS**

1. **COMPLETION DATE.** The Contractor has the option of selecting the starting date for this Contract. Once selected, notify the Department in writing of the date selected at least two weeks prior to beginning work. All work is to be completed by the date listed below. An allotted number of calendar days are assigned to the/each structure in this contract as shown below.

<u>WORK TO BE DONE</u>	<u>ALLOTTED TIME</u>	<u>COMPLETION DATE</u>
Overlay, Joint Replacement		
Steel Girder Repairs		
098B00151N Phase 1/2	90 Calendar Days / Phase	August 1, 2026
All Other Work		August 1, 2026

Contrary to Section 108.07.03, the Engineer will begin charging calendar days for a structure on the day the Contractor starts work or sets up traffic control on that particular structure. A **penalty of \$500.00 per day** will be assessed when the allotted number of calendar days is exceeded for each structure.

All construction must be completed in accordance with the weather limitations specified in Section 606 and/or Section 601 as applicable. No extension of Contract time will be granted due to inclement weather or temperature limitations that occur due to starting work on the Contract or a structure late in the construction season.

# MAINTENANCE OF TRAFFIC NOTES

## PHASING NOTES

### PHASE 1

1. TRANSITION NORTHBOUND AND SOUTHBOUND TRAFFIC TO 1 (ONE) LANE IN EACH DIRECTION, AS SHOWN IN THE PLANS.
2. SHIFT NORTHBOUND TRAFFIC LANE ACROSS FLUSH MEDIAN TO SOUTHBOUND LANES OF US 119 PRIOR TO REACHING BRIDGE ENDS. ALLOW A 50 FOOT BUFF ZONE BETWEEN THE END OF THE SHIFTING TAPERS AND BRIDGE ENDS.
3. SHIFT NORTHBOUND LANES THROUGH THE INTERSECTION, AS SHOWN IN THE PLANS, TO THE NORTHBOUND SIDE OF US 119.
4. TRANSITION SOUTHBOUND AND NORTHBOUND LANES BACK TO 2 (TWO) LANES IN EACH DIRECTION.

### PHASE 2

1. TRANSITION NORTHBOUND AND SOUTHBOUND TRAFFIC TO 1 (ONE) LANE IN EACH DIRECTION, AS SHOWN IN THE PLANS.
2. SHIFT SOUTHBOUND TRAFFIC LANE THROUGH THE INTERSECTION TO THE NORTHBOUND LANES OF US 119 PRIOR TO REACHING BRIDGE ENDS. ALLOW A 50 FOOT BUFF ZONE BETWEEN THE END OF THE SHIFTING TAPERS AND BRIDGE ENDS.
3. SHIFT SOUTHBOUND TRAFFIC LANE ACROSS THE FLUSH MEDIAN TO SOUTHBOUND LANES OF US 119 AFTER CROSSING THE BRIDGE END. ALLOW A 50 FOOT BUFF ZONE BETWEEN THE END OF THE SHIFTING TAPERS AND BRIDGE ENDS.
4. TRANSITION SOUTHBOUND AND NORTHBOUND LANES BACK TO 2 (TWO) LANES IN EACH DIRECTION.

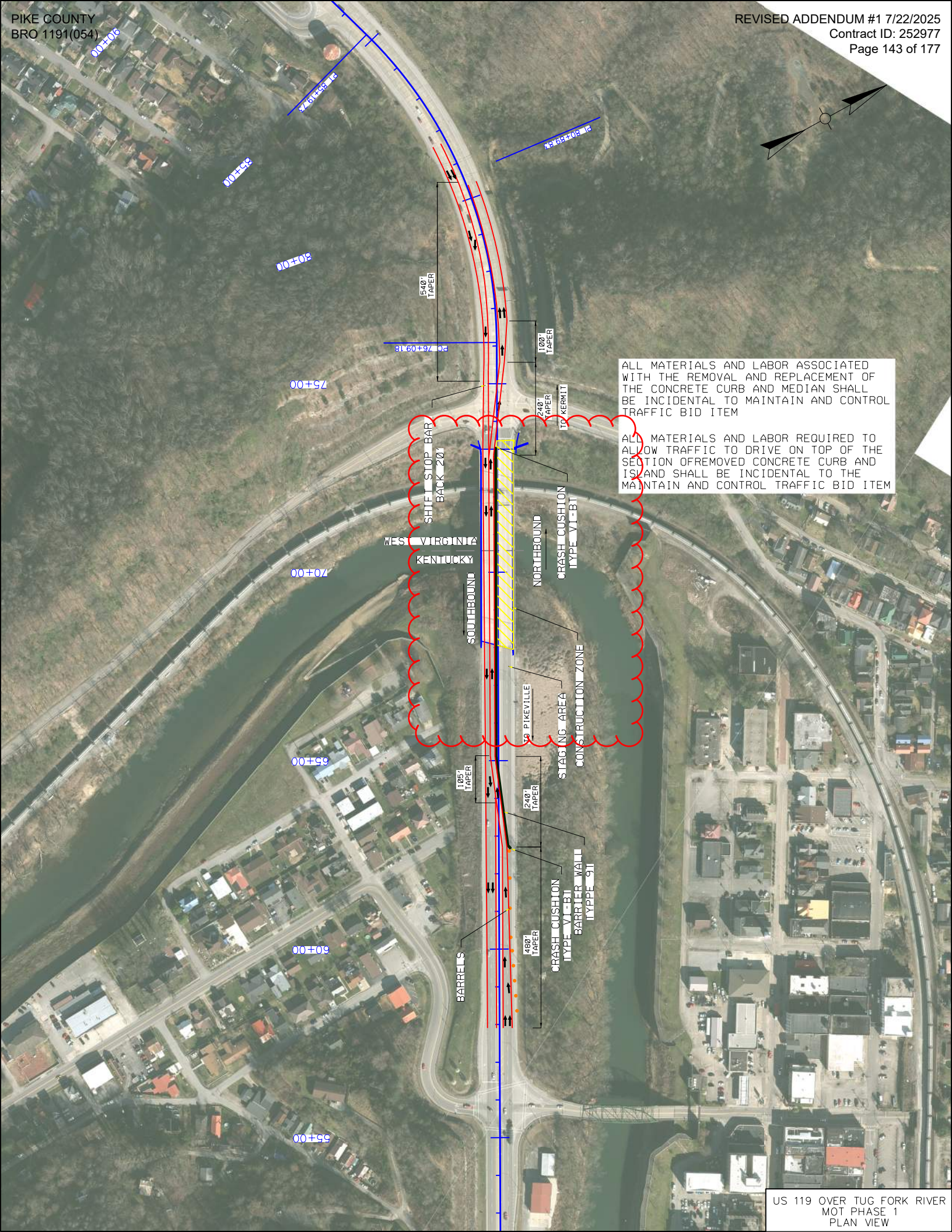
### PHASE 3

1. REMOVE ALL TEMPORARY TRAFFIC CONTROL ITEMS AND OPEN ALL LANES TO TRAFFIC.

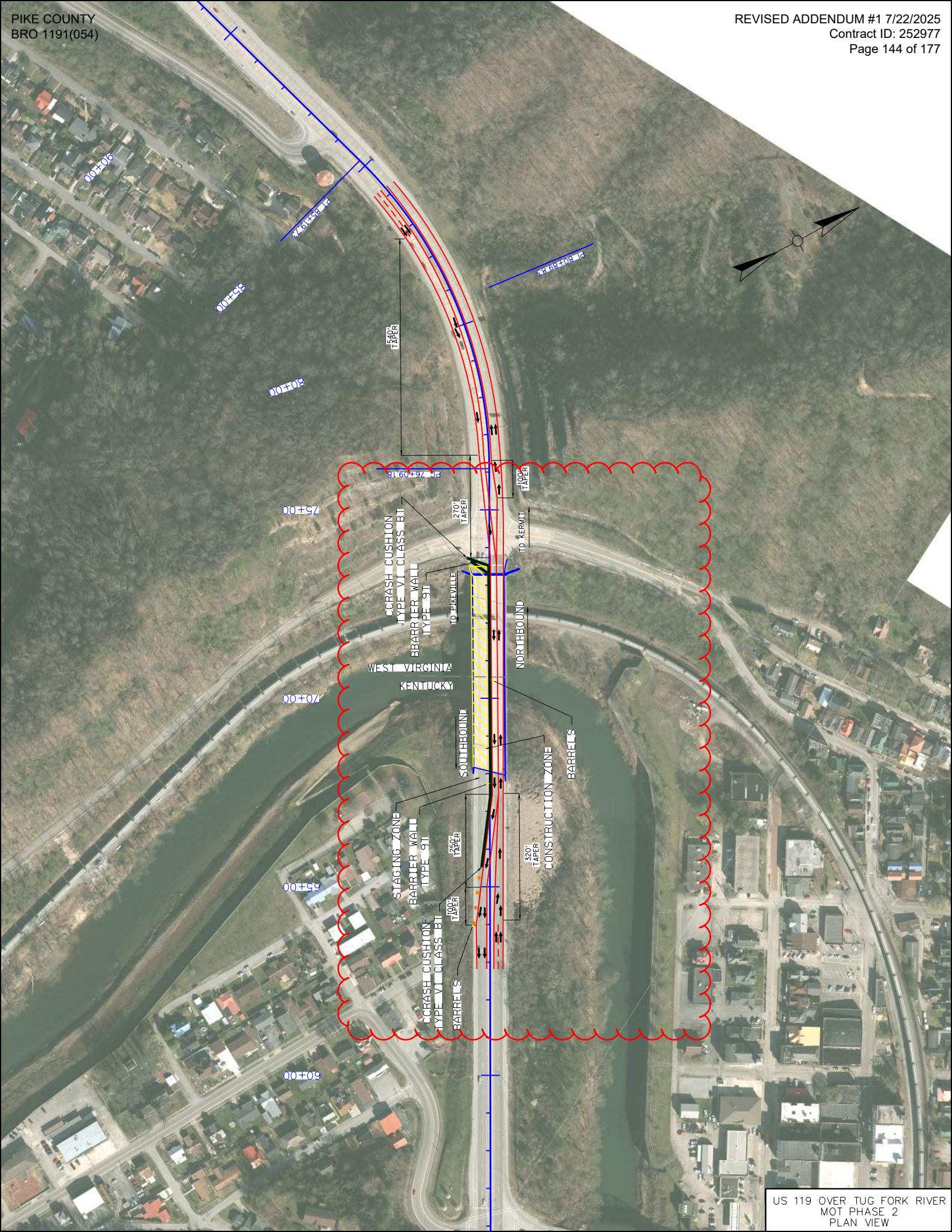
## GENERAL NOTES

1. TRAFFIC SHALL BE MAINTAINED IN ACCORDANCE WITH THE MANUAL ON UNIFORM TRAFFIC CONTROL DEVICES, THE STANDARD SPECIFICATIONS FOR ROAD AND BRIDGE CONSTRUCTION AND THE STANDARD DRAWINGS, CURRENT EDITIONS.
2. EXCEPT FOR THE ROADWAY AND TRAFFIC CONTROL BID ITEMS LISTED, ALL ITEMS OF WORK NECESSARY TO MAINTAIN AND CONTROL TRAFFIC WILL BE PAID AT THE LUMP SUM BID PRICE TO "MAINTAIN AND CONTROL TRAFFIC" AS SET FORTH IN THE CURRENT STANDARD SPECIFICATIONS FOR ROAD AND BRIDGE CONSTRUCTION UNLESS OTHERWISE PROVIDED FOR IN THESE NOTES. THE LUMP SUM BID TO "MAINTAIN AND CONTROL TRAFFIC" SHALL ALSO INCLUDE, BUT IS NOT LIMITED TO, THE FOLLOWING ITEMS AND OPERATIONS:
  - A. ALL GRADING AND NECESSARY DRAINAGE (UNLESS A BID ITEM FOR DETOUR CONSTRUCTION IS INCLUDED) FOR THE TEMPORARY ROADWAY AND REMOVAL THEREOF, WHEN IT IS NO LONGER NEEDED. IF A BID ITEM FOR DETOUR CONSTRUCTION IS INCLUDED, GRADING AND DRAINAGE WILL BE PAID FOR IN THE BID ITEM "DETOUR CONSTRUCTION".
  - B. ALL LABOR AND MATERIALS NECESSARY FOR CONSTRUCTION AND MAINTENANCE OF TRAFFIC CONTROL DEVICES AND MARKINGS.
  - C. ALL FLAGPERSONS AND TRAFFIC CONTROL DEVICES SUCH AS, BUT NOT LIMITED TO, FLASHERS, SIGNS BARRICADES AND VERTICAL PANELS, PLASTIC DRUMS (STEEL DRUMS WILL NOT BE PERMITTED) AND CONES NECESSARY FOR THE CONTROL AND PROTECTION OF VEHICULAR AND PEDESTRIAN TRAFFIC AS SPECIFIED IN THESE NOTES, THE PLANS, THE MUTCD OR THE ENGINEER.
3. ANY TEMPORARY TRAFFIC CONTROL ITEMS, DEVICES, MATERIALS AND INCIDENTALS SHALL REMAIN THE PROPERTY OF THE CONTRACTOR WHEN NO LONGER NEEDED.
4. THE CONTRACTOR SHALL MAINTAIN A TWO-LANE TRAVELED WAY WITH A MINIMUM LANE WIDTH OF 11 FEET. HOWEVER, DURING WORKING HOURS, ONE-WAY TRAFFIC MAY BE ALLOWED AT THE DISCRETION OF THE ENGINEER, PROVIDED ADEQUATE SIGNING AND A FLAGPERSON ARE AT THE LOCATION.
5. THE CONTRACTOR SHALL COMPLETELY COVER ANY SIGNS, EITHER EXISTING, PERMANENT OR TEMPORARY, WHICH DO NOT PROPERLY APPLY TO THE CURRENT TRAFFIC PHASING, AND SHALL MAINTAIN THE COVERING UNTIL THE SIGNS ARE APPLICABLE OR ARE REMOVED.
6. IN GENERAL, ALL TRAFFIC CONTROL DEVICES SHALL BE PLACED STARTING AND PROCEEDING IN THE DIRECTION OF THE FLOW OF TRAFFIC AND REMOVED STARTING AND PROCEEDING IN THE DIRECTION OPPOSITE THE FLOW OF TRAFFIC.
7. THE ENGINEER AND THE CONTRACTOR, OR THEIR AUTHORIZED REPRESENTATIVES, SHALL REVIEW THE SIGNING BEFORE TRAFFIC IS ALLOWED TO USE ANY LANE CLOSURES, CROSSOVERS OR DETOURS. ALL SIGNING SHALL BE APPROVED BY THE ENGINEER BEFORE WORK CAN BE STARTED BY THE CONTRACTOR.
8. IF THE CONTRACTOR DESIRES TO DEVIATE FROM THE TRAFFIC CONTROL SCHEME AND CONSTRUCTION SCHEDULE OUTLINED IN THESE PLANS AND THIS PROPOSAL, HE SHALL PREPARE AN ALTERNATE PLAN AND PRESENT IT IN WRITING TO THE ENGINEER. THIS ALTERNATE PLAN CAN BE USED ONLY AFTER REVIEW AND APPROVAL OF THE DIVISIONS OF TRAFFIC, DESIGN AND CONSTRUCTION, AND THE FEDERAL HIGHWAY ADMINISTRATION, WHERE APPLICABLE.
9. IF TRAFFIC SHOULD BE STOPPED DUE TO CONSTRUCTION OPERATIONS AND AN EMERGENCY VEHICLE ON AN OFFICIAL EMERGENCY RUN ARRIVES AT THE SCENE, THE CONTRACTOR SHALL MAKE THE PROVISIONS FOR THE PASSAGE OF THAT VEHICLE AS QUICKLY AS POSSIBLE.
10. ALL SIGNS NECESSARY FOR A MARKED DETOUR WILL BE PROVIDED BY THE CONTRACTOR AS REQUIRED BY STANDARD DRAWINGS AND THE MUTCD. SIGNS OUTSIDE THE PROJECT LIMITS SHALL BE PAID FOR BY THE SQUARE FOOT. THIS QUANTITY SHALL INCLUDE SIGN MOUNTING HARDWARE AND POSTS.
11. THE CONTRACTOR SHALL COORDINATE WITH THE WVDOT AND/OR THE OWNER OF THE TRAFFIC SIGNAL AT THE INTERSECTION OF US 119 AND W 3RD AVE/S BEN STREET TO ADJUST SIGNAL TIMING AS NEEDED DURING CONSTRUCTION WHEN TRAFFIC LANES DO NOT ALIGN WITH SIGNAL DETECTORS.

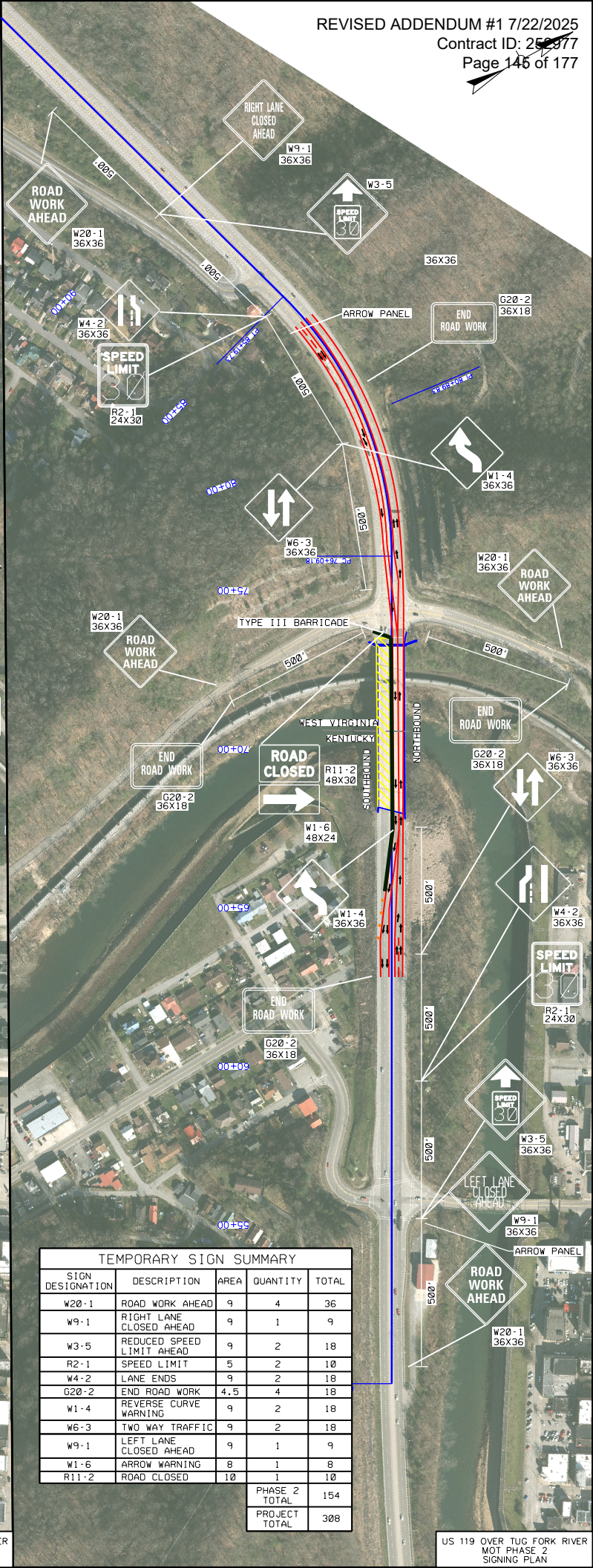














252977

Section: 0001 - BRIDGES - 098B00115N

LINE	BID CODE	ALT	DESCRIPTION	QUANTITY	UNIT	UNIT PRIC	FP	AMOUNT
0005	02003		RELOCATE TEMP CONC BARRIER (ADDED 7-23-25)	865.00	LF		\$	
0008	02898		RELOCATE CRASH CUSHION (ADDED 7-23-25)	2.00	EACH		\$	
0010	02014		BARRICADE-TYPE III	4.00	EACH		\$	
0020	02562		TEMPORARY SIGNS	380.00	SQFT		\$	
0030	02650		MAINTAIN & CONTROL TRAFFIC	1.00	LS		\$	
0040	02671		PORTABLE CHANGEABLE MESSAGE SIGN	2.00	EACH		\$	
0050	02775		ARROW PANEL	2.00	EACH		\$	
0051	03171		CONC BARRIER WALL TYPE 9T (ADDED 7-23-25)	1,070.00	LF		\$	
0060	03297		EXPAN JOINT REPLACE 3 IN	183.00	LF		\$	
0070	03298		EXPAN JOINT REPLACE 4 IN	176.00	LF		\$	
0080	03299		ARMORED EDGE FOR CONCRETE	183.00	LF		\$	
0090	03304		BRIDGE OVERLAY APPROACH PAVEMENT	1,453.00	SQYD		\$	
0100	06510		PAVE STRIPING-TEMP PAINT-4 IN	22,260.00	LF		\$	
0110	06514		PAVE STRIPING-PERM PAINT-4 IN	4,000.00	LF		\$	
0120	08106		CONCRETE-CLASS M 1	11.00	CUYD		\$	
0130	08151		STEEL REINFORCEMENT-EPOXY COATED	1,810.00	LB		\$	
0140	08504		EPOXY SAND SLURRY	800.00	SQYD		\$	
0150	08526		CONC CLASS M FULL DEPTH PATCH	25.00	CUYD		\$	
0160	08534		CONCRETE OVERLAY-LATEX	190.00	CUYD		\$	
0170	08549		BLAST CLEANING	5,356.00	SQYD		\$	
0180	08551		MACHINE PREP OF SLAB	4,556.00	SQYD		\$	
0185	20738NS112		TEMP CRASH CUSHION (ADDED 7-23-25)	2.00	EACH		\$	
0190	21659NN		RELOCATE SIGNAL HEAD	4.00	EACH		\$	
0200	22146EN		CONCRETE PATCHING REPAIR	892.00	SQFT		\$	
0210	24094EC		PARTIAL DEPTH PATCHING	80.00	CUYD		\$	
0220	24665EX		RAILROAD COORDINATION	1.00	LS		\$	
0230	24879EC		STEEL REPAIR	2.00	EACH		\$	
0240	24981EC		BRIDGE CLEANING -	1.00	LS		\$	
0250	24982EC		CONCRETE COATING -	1.00	LS		\$	
0260	24983EC		BEARING LUBRICATION - ABUTMENTS	22.00	EACH		\$	
0270	24983EC		BEARING LUBRICATION - PIERS	44.00	EACH		\$	
0280	25015EC		FRP WRAP	1,943.00	SQFT		\$	

Section: 0002 - DEMOBILIZATION

LINE	BID CODE	ALT	DESCRIPTION	QUANTITY	UNIT	UNIT PRIC	FP	AMOUNT
0290	02569		DEMOBILIZATION	1.00	LS		\$	